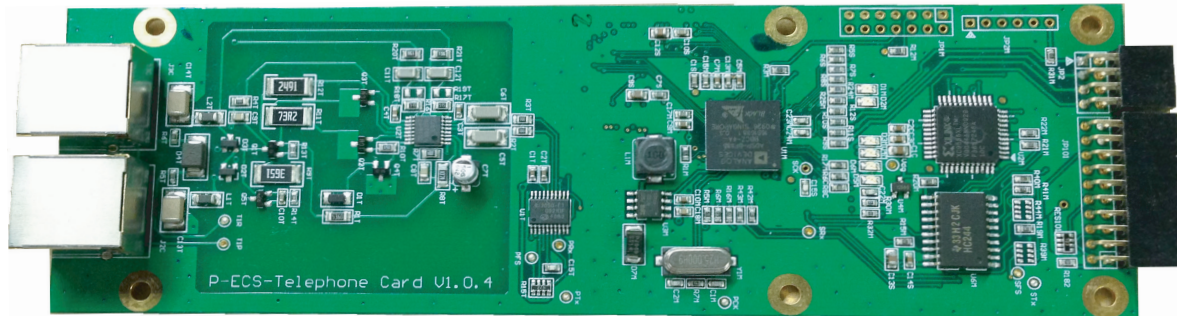


# IDA8T TELCO CARD



1



## DESCRIPTION:

The IDA8T Telco card allows the connection of a telephone line or PBX to the IDA8 system for the purpose of DTMF paging and or outgoing audio feeds. Incorporating a wide variety of audio processing and enhancements the IDA8T provides industry leading audio quality. The IDA8T Telco card can also be controlled over 3rd party equipment like, AMX or Crestron via RS232 serial port or Ethernet.

## FEATURES:

- Fully configurable in ATEIS Studio  
Drag n' Drop DSP environment
- Caller level
- Ring level
- Noise Suppression
- Line Echo Cancellation
- Voice Enhance
- Manual or Auto Answer
- Hang up warning
  - Outgoing calls:
    - DTMF tone dialing
    - Speed dialing
    - Redial
    - Flash
    - Contact manager

## INDICATORS:

- Dialing in progress
- Ringing
- Ready
- Connected
- Busy
- Line Fault

## ARCHITECTS' AND ENGINEERS' SPECIFICATIONS

The telephone interface shall allow direct connection to an analogue telephone line using a 2 to 4 wire standard wiring scheme. The telephone interface shall provide line monitoring, line echo cancellation, noise suppression, voice enhance, and offer fully adjustable caller and ring levels as well as outgoing call levels. Indication for status shall be provided in software.