

# RCS5T

## 5" Twin-Cone Torsion-Mount Speaker Package



# 1

### ■ FEATURES

- Time-tested Metal Grille with Hardware-free Appearance
- Torsion-mount Assembly for Fast/Easy Installation
- 5" Twin-Cone for Good High-Frequency Dispersion
- Dual 70.7/25-volt Xfrmr with Spade-lug Taps
- Terminal Block Connection

### ■ DESCRIPTION

The Penton Audio RCS5T has a two-part, torsion-mount, CRS grille baffle with a steel mesh grille to present a stylish hardware-free look. Easy to install, terminal block connection and spade-lug transformer taps allow fast, easy installation and/or wattage change.

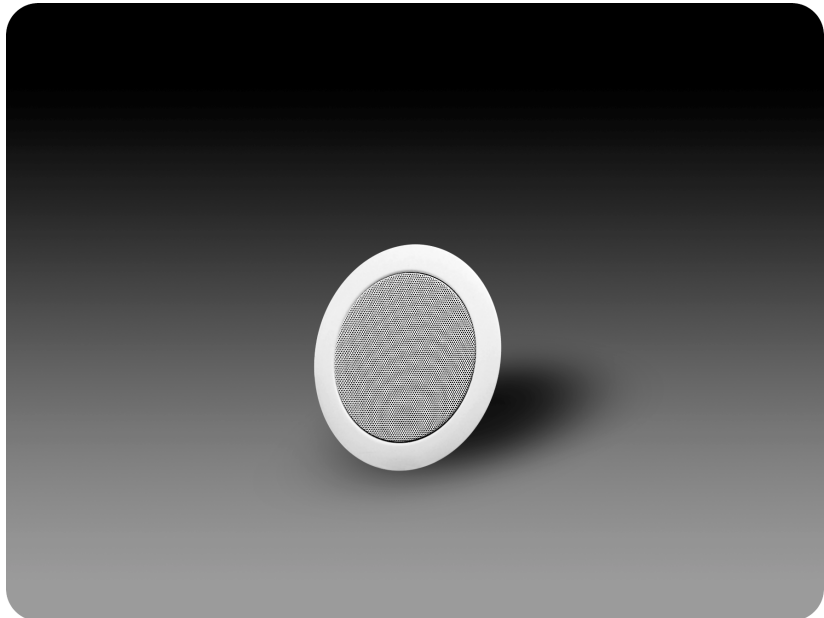
This speaker package combines the wide dispersion of a 5", twin-cone loudspeaker with aesthetic excellence, installation advantages and a versatile four-watt, 70.7/25-volt transformer. Economy is provided by efficient design combined with a five-ounce magnet.

The popular grille design is finished in non-reflecting ceiling white.

### ■ APPLICATION

Generally, a 5" cone speaker offers a wider coverage angle than a typical 8" without greatly compromising speaker efficiency or demanding higher power. Therefore, it is an excellent choice when ceiling heights are low. Naturally, since there is less cone area present, the low-frequencies are not as pronounced.

The 5" RCS speaker package is an excellent choice for value-designed in-ceiling audio projects. It is perfect for low-ceiling applications in industry, commercial and institutions, including offices, banks, schools, restaurants, hotel/motels, malls - wherever precise transmission of audio is required.



### ■ SPECIFICATIONS

- |  |  |
|--|--|
| <ul style="list-style-type: none"><li>• <b>CONE SPEAKER SIZE:</b><br/>5-1/4" (134 mm)</li></ul>                                  | <ul style="list-style-type: none"><li>• <b>70.7-VOLT TRANSFORMER TAPS:</b><br/>5, 2, 1, 0.5, 0.25</li></ul>  |
| <ul style="list-style-type: none"><li>• <b>FREQUENCY RESPONSE (SEE FIG 1):</b><br/>100-20,000 Hz <math>\pm</math> 6 dB</li></ul> | <ul style="list-style-type: none"><li>• <b>70.7-VOLT TRANSFORMER IMPEDANCE:</b><br/>1K, 2.5K, 5K, 10K, 20K</li></ul>   |
| <ul style="list-style-type: none"><li>• <b>POWER HANDLING (RAW DRIVER):</b><br/>10 watts</li></ul>                               | <ul style="list-style-type: none"><li>• <b>25-VOLT TRANSFORMER TAPS:</b><br/>5, 2, 1, 0.625, 0.25</li></ul>  |
| <ul style="list-style-type: none"><li>• <b>SPL @ 1w 1m:</b><br/>93 dB</li></ul>  | <ul style="list-style-type: none"><li>• <b>25-VOLT TRANSFORMER IMPEDANCE:</b><br/>125, 312, 625, 1K, 2.5K</li></ul>  |
| <ul style="list-style-type: none"><li>• <b>DISPERSION @ 2 kHz:</b><br/>105°</li></ul>  | <ul style="list-style-type: none"><li>• <b>APPROVALS:</b><br/>CE</li></ul>   |
| <ul style="list-style-type: none"><li>• <b>DIRECTIVITY Q FACTOR @ 2 kHz:</b><br/>4.6</li></ul>                                   | <ul style="list-style-type: none"><li>• <b>MOUNTING:</b><br/>Quick-Release Torsion Springs<br/>Locked onto Baffle</li></ul>                                    |
| <ul style="list-style-type: none"><li>• <b>CONE DESIGN:</b><br/>Twin Cone</li></ul>  | <ul style="list-style-type: none"><li>• <b>BAFFLE MATERIAL:</b><br/>Two-part CRS Steel with Steel Mesh</li></ul>   |
| <ul style="list-style-type: none"><li>• <b>CONE MATERIAL:</b><br/>Paper</li></ul>  | <ul style="list-style-type: none"><li>• <b>FINISH:</b><br/>White, Non-reflective, Baked Epoxy</li></ul>  |
| <ul style="list-style-type: none"><li>• <b>MAGNET WEIGHT:</b><br/>5.34 oz</li></ul>  | <ul style="list-style-type: none"><li>• <b>SUGGESTED MOUNTING ACCESSORIES:</b><br/>BBX5 Steel Backbox<br/>BRG5 Tile Bridge<br/>MBK5 Mounting Bracket</li></ul> |
| <ul style="list-style-type: none"><li>• <b>TRANSFORMER MAX INSERTION LOSS:</b><br/>1.5 dB</li></ul>                              | <ul style="list-style-type: none"><li>• <b>DIMENSIONS, INCH (MM):</b><br/>7.44 x 2.24 (189 x 57)</li></ul>   |
| <ul style="list-style-type: none"><li>• <b>TRANSFORMER TAP CHANGE:</b><br/>Movable Spade Lug</li></ul>                           | <ul style="list-style-type: none"><li>• <b>NET WEIGHT LBS (KGS):</b><br/>2.05 (0.93)</li></ul>   |
| <ul style="list-style-type: none"><li>• <b>CONNECTION:</b><br/>Via Terminal Block</li></ul>                                      |  |

# RCS5T

## ARCHITECTS' AND ENGINEERS' SPECIFICATIONS:

Unit shall be Penton Audio USA Model RCS5T or approved equal. Assembly shall be comprised of a 5-1/4" twin-cone loudspeaker, dual-voltage, premounted transformer and two-part white baffle having no visible hardware.

Baffle shall be round with torsion-spring mounting. Two-part grille shall be CRS with a steel inner mesh grille.

Loudspeaker shall have wide-angle 105° dispersion. Cone shall be a damped, high-compliance type with a smooth extended response over a range of 100-20,000 Hz. Sensitivity shall be a minimum of 93 dB @ 1 watt, 1 meter.

Included transformer shall be 70.7/25-volts with power taps of 5, 2, 1, 0.5 and 0.25 watts clearly marked on the assembly. Insertion loss shall not exceed 1.5 dB.

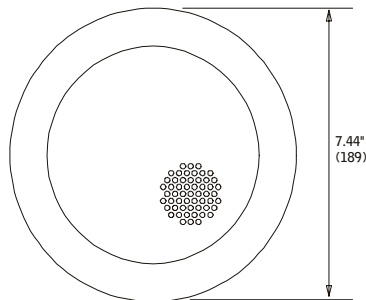


Fig 3: Front View

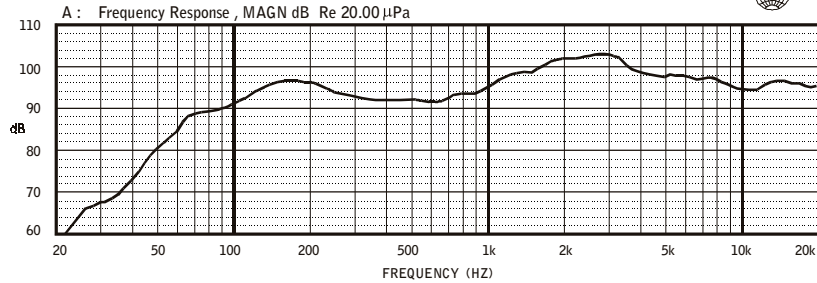


Fig 1: Frequency Response (Measured in Infinite Baffle)

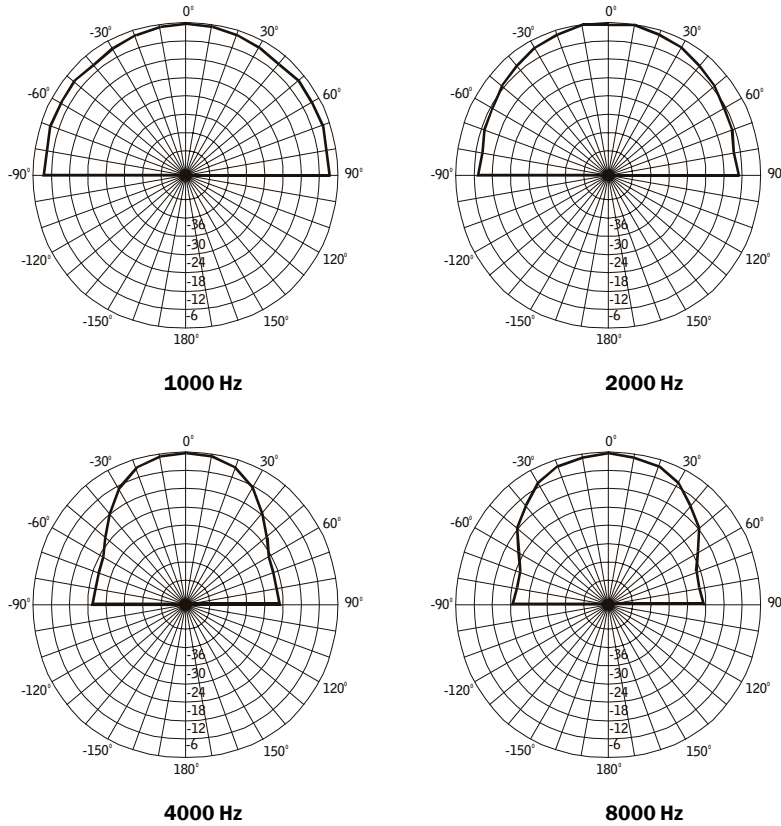


Fig 2: Polar Patterns

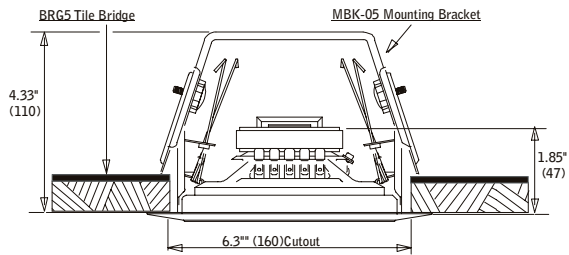


Fig 4: Side View

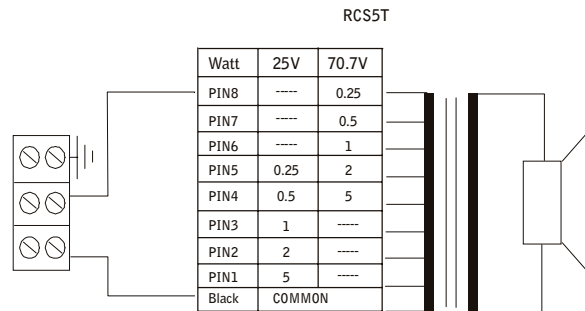


Fig 5: Circuit Diagram

**Penton Audio USA** - a subsidiary of Penton Media Technologies

406 Lincoln St., Marlborough, MA 01752

Phone: (888) 883-8383

Fax: (888) 821-2121

Website: [www.penton-usa.com](http://www.penton-usa.com)

