

RCS6XT

6" Coaxial Torsion-Mount Speaker Package



1

■ FEATURES

- Hardware-free Metal Grille for Prestige Appearance
- Terminal Block Connection
- Torsion-mount Assembly for Fast/Easy Installation
- Coaxial for Smooth High-Frequency Dispersion
- Dual 70.7/25-volt Xfrmr with Spade-lug Taps

■ DESCRIPTION

Aesthetic excellence, a robust 10-ounce magnet and a superb 1" Mylar dome tweeter complete with a 1/2" moving coil and neodymium magnet make Penton Audio's RCS6XT a premium speaker package. Unit combines the wide dispersion associated with 6" loudspeakers with torsion-spring installation advantages and a versatile 8-watt, 70.7/25-volt transformer.

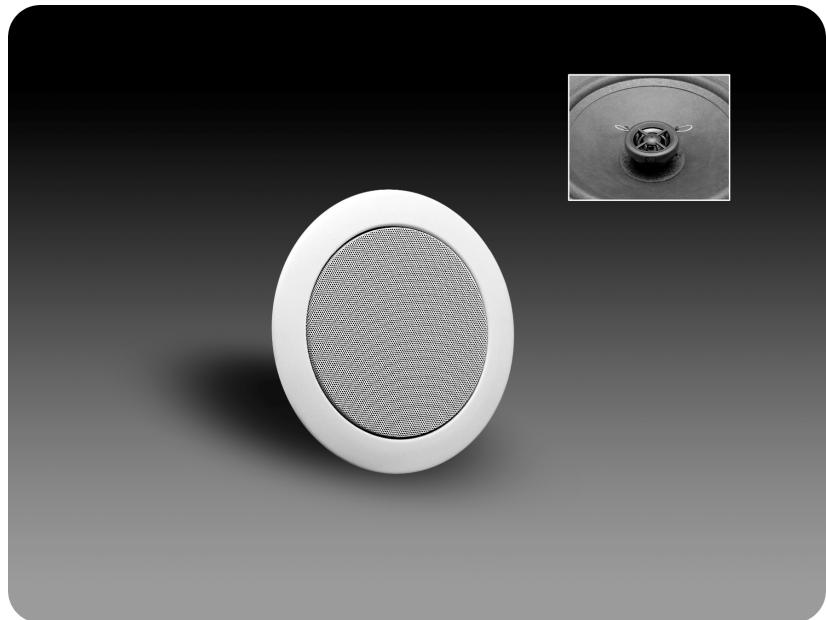
This speaker package has a two-part, torsion-mount, CRS grille baffle with a steel mesh grille to present a stylish hardware-free look. Its terminal block connection and spade-lug transformer taps combined with torsion properties allow quick and easy installation and/or wattage changes.

The popular round speaker package is finished in non-reflecting ceiling white.

■ APPLICATION

6" speakers are a fine tool for the sound contractor and audio designer. When ceiling heights don't warrant the use of an 8" speaker, a 6" loudspeaker will typically provide better coverage at less cost but with significantly more bass than a 5".

The 6" RCS speaker package is a fine choice for value-designed in-ceiling audio projects. The speakers are designed for commercial, industrial and institutional applications including offices, banks, schools, restaurants, hotel/motels, malls - wherever precise transmission of audio is required.



■ SPECIFICATIONS

• CONE SPEAKER SIZE:

6-1/2" (165 mm)

• FREQUENCY RESPONSE (SEE FIG 1):

60-18,000 Hz \pm 6 dB

• POWER HANDLING (RAW DRIVER):

20 watts

• SPL @ 1w 1m:

92 dB

• DISPERSION @ 2 kHz (-6 dB):

120°

• DIRECTIVITY Q FACTOR @ 2 kHz:

5.1

• CONE DESIGN:

Coaxial

• TWEETER TYPE:

1" Mylar Dome with 1/2" Moving Coil and Neodymium Magnet

• CONE MATERIAL:

Paper with Rubber Surround

• MAGNET WEIGHT:

10 oz

• TRANSFORMER MAX INSERTION LOSS:

0.8 dB

• TRANSFORMER TAP CHANGE:

Movable Spade Lug

• CONNECTION:

Via Terminal Block

• 70.7-VOLT TRANSFORMER TAPS:

8, 4, 2, 1, 0.5

• 70.7-VOLT TRANSFORMER IMPEDANCE:

625, 1.25K, 2.5K, 5K, 10K

• 25-VOLT TRANSFORMER TAPS:

8, 4, 2, 1, 0.5

• 25-VOLT TRANSFORMER IMPEDANCE:

78, 158, 312, 625, 1.25K

• APPROVALS:

CE

• MOUNTING:

Quick-Release Torsion Springs
Locked onto Baffle

• BAFFLE MATERIAL:

Two-part CRS Steel with Steel Mesh

• FINISH:

White, Non-reflective, Baked Epoxy

• SUGGESTED MOUNTING ACCESSORIES:

BBX6 Steel Backbox
BRG6 Tile Bridge
MBK6 Mounting Bracket

• DIMENSIONS, INCH (MM):

9.41 x 1.97 (239 x 50)

• NET WEIGHT LBS (KGS):

2.29 (1.04)

RCS6XT

ARCHITECTS' AND ENGINEERS' SPECIFICATIONS:

Unit shall be Penton Audio USA Model RCS6XT or approved equal. Assembly shall be comprised of a coaxial 6" loudspeaker with 10-ounce magnet and 1" Mylar dome tweeter complete with a 1/2" moving coil and neodymium magnet. It shall also have a pre-mounted transformer and two-part, non-reflective white baffle with no visible hardware.

Two-part baffle shall be CRS with inner steel mesh grille. Baffle shall be round with torsion-spring mounting.

Loudspeaker shall have wide-angle 120° dispersion at 2000 Hz. Cone shall be a damped, high-compliance type with a smooth extended response over a range of 60-18,000 Hz. Sensitivity shall be a minimum of 92 dB @ 1 watt, 1 meter.

Included shall be a 70.7/25-volt transformer with power taps of 8, 4, 2, 1 and 0.5 watts clearly marked on the assembly. Insertion loss shall not exceed 0.8 dB.

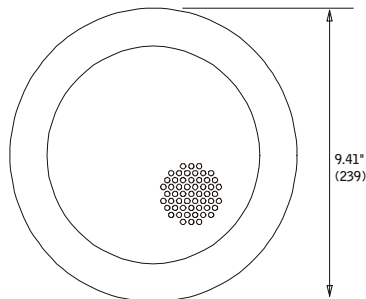


Fig 3: Front View

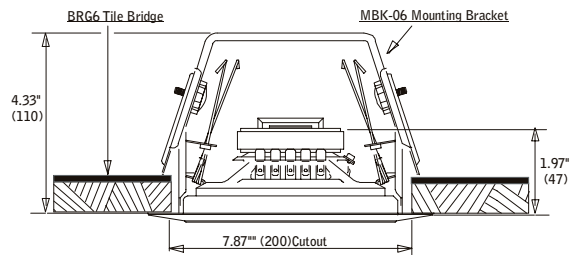


Fig 4: Side View

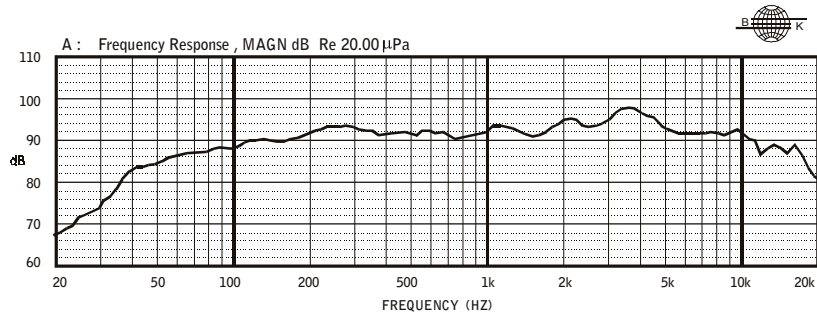


Fig 1: Frequency Response (Measured in Infinite Baffle)

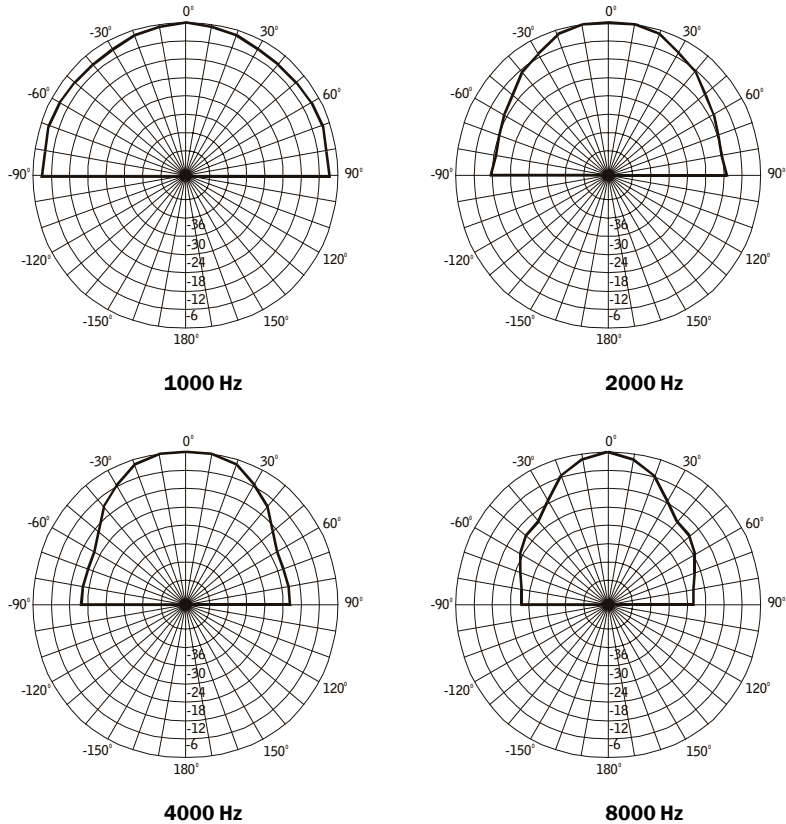


Fig 2: Polar Patterns

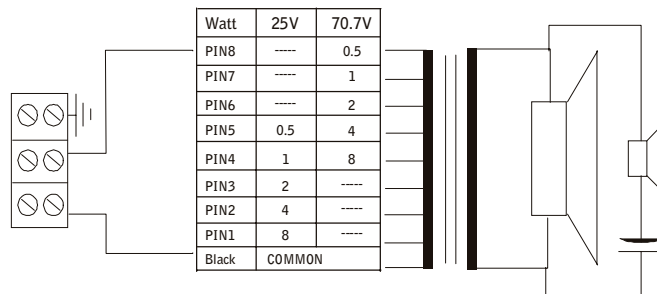


Fig 5: Circuit Diagram

Penton Audio USA - a subsidiary of Penton Media Technologies

406 Lincoln St., Marlborough, MA 01752

Phone: (888) 883-8383

Fax: (888) 821-2121

Website: www.penton-usa.com



© 2002 Penton Audio USA

Specifications subject to change without notice

SS02-1061